



REPORT – ONLINE TRAINING PROGRAMME (MOODLE PLATFORM)

*Deliverable D5.1 Training programme and materials available
off – and online of the EXCITE project*

Responsible partner: Romania Green Building Council

Version 1.0, September 2021

The sole responsibility for the content of this publication lies with the authors. It does not necessarily reflect the opinion of the European Union. Neither the EASME nor the European Commission are responsible for any use that may be made of the information contained therein.

WWW.EXCITE-PROJECT.EU

WWW.EUROPEAN-ENERGY-AWARD.ORG

This project has received funding from the European Union's Horizon 2020 research and innovation programme under Grant Agreement No 892034.



Version	2
Dissemination level	Public
Deliverable lead	RoGBC
Authors	Dorin Beu, Sergiu Fodorean (RoGBC)
Abstract	Exc!te training programs designed to provide European Energy Award knowledge exchange and the involvement of municipalities and stakeholders to inform creating innovative sustainable energy management strategies. The online learning platform will also be used to involve stakeholders in terms of methodology and feedback, as well as these strategies implemented in pilot cities. The training program makes also connection with previous H2020 projects like CoME EASY, explaining the benefits of synchronization between European Energy Award and Covenant of Mayors. It allow stakeholders to join and contribute with minimal content the amount of effort. Guides to encourage user-generated content (beyond eea partners) will also be introduced moderation techniques to ensure a positive user experience.
Keywords	Online training platform, Stakeholder, Municipalities, eea, Moodle

Contents

SUMMARY	4
1.EXC!TE PROJECT	5
2.PROJECT WORK PACKAGE CONTEXT	6
3. OBJECTIVE OF DELIVERABLE.....	7
4. GENERAL BACKGROUND	7
5. ONLINE MANAGEMENT AND MODERATION.....	8
6. INTRODUCTION – MOODLE PLATFORM.....	9
6.1. General information	9
6.2. Create account.....	9
6.3. Access	10
6.4. Front page.....	11
6.5. Courses	11
7. CONCLUSION	21
8. DIPLOMA	22

SUMMARY

Romania Green Building Council is part of the Excl!te project which is an extension of the CoME EASY project for the eastern part of Europe. This project includes several countries such as Bulgaria, Ukraine, Northern Macedonia, Romania and Slovenia.

The EU-funded EXCITE project aims to enhance energy efficiency measures in the central eastern European municipalities. It will apply the European Energy Award (eea), which supports local authorities in establishing interdisciplinary planning approaches and implementing effective energy and climate policy measures through the rational use of energy and increased use of renewable energies. This is expected to attract innovative businesses to the municipalities and engage civil society to assist in the shift to more sustainable practices. It will also facilitate the transfer of knowledge between well-developed Austrian, Swiss and French municipalities.

Romania Green Building Council is in charge of the development of a distance learning platform", „Peer-to-peer learning" that focuses to encourage the know-how transfer from the countries where eea has more than 10 years of experience and from newly established eea countries of similar stature like Ukraine and Romania which will share their experience in the implementation process. The idea is to have a direct contact with municipalities which are using eea for the city management and have a first-hand approach with eea best practices.

One of the main activities is to prepare an e-learning course for further training, train the energy managers and relevant departments in using eea as an energy management tool and train the energy managers and relevant departments in using eea as an energy management tool.

This online learning course is created using the Moodle platform. The Moodle platform is the largest platform for creating online courses and lessons in the world, but the most important thing is that this platform is free for everybody.

The main objective is to share knowledge, documents and experiences. RoGBC must create a network between users and involve the public in learning processes, thus increasing the engagement and involvement of the target groups. In order to achieve this goal, an adapted tools is needed that all target groups can use. Thus, the Moodle learning platform was chosen, which is a free platform, and the course created and supported by RoGBC servers.

1. EXCITE PROJECT

The EU's energy sectors are being decarbonised, but the process is not developing evenly across the bloc. The low-carbon transition is slower in central and eastern Europe. The EU-funded EXCITE project aims to enhance energy efficiency measures in the central eastern European municipalities. It will apply the European Energy Award (eea), which supports local authorities in establishing interdisciplinary planning approaches and implementing effective energy and climate policy measures through the rational use of energy and increased use of renewable energies. This is expected to attract innovative businesses to the municipalities and engage civil society to assist in the shift to more sustainable practices. It will also facilitate the transfer of knowledge between well-developed Austrian, Swiss and French municipalities.

The goal of the EXCITE project is to apply the well-established energy management scheme of the European Energy Award (eea) Eastern European municipalities (Bulgaria, Ukraine, Romania, North Macedonia, Slovenia), enabling them to become trusted partners to the investors and engaging local communities for deliberate climate action. This, on its end, will help attract new innovative businesses to the involved cities and municipalities and will intensify the local economies, supporting them in the surge for better living standard and maintaining young and vibrant communities proactively contributing to the energy transition. Through applying the methodology the eea methodology, the project will enhance the implementation of energy efficiency measures at local level through securing the necessary technical, economic and social conditions for attracting of private investors, promoting public entrepreneurship and successful leveraging of the scarce public resources.

As achievement this goal requires broad public support, the project will invest significant efforts in developing interface capacities for engagement with the civil society and incentivize local communities to proactively use the available opportunities, becoming a driving force in the European energy transition. The actions will also support the implementation of the Covenant of Mayors, enabling more municipalities to join the initiative and serving as major data input and result monitoring tool for the actual implementation of the Sustainable Energy and Climate Action Plans (SECAPs) of the involved municipalities. Last but not least, the embracing of the eea methodology will become the basis of an action-oriented peer learning platform, transferring experience and know-how from already well-developed Austrian, Swiss and French municipalities but also enabling peer to peer learning between cities in Eastern Europe, gradually shifting to more sustainable practices in their economic and social development.

1.1 ABBREVIATIONS LIST

BP	Best Practice
CoM	Covenant of Mayors
EC	European Commission
eea	European Energy Award
EMT	Energy Management Tool of the EEA network
H2020	Horizon 2020
LA(s)	Local Authority(ies)
SECAP(s)	Sustainable Energy and Climate Action Plan(s)

2. PROJECT WORK PACKAGE CONTEXT

The online training platform represents „Peer-to-peer learning” that focuses to encourage the know-how transfer from the countries where eea has more than 10 years of experience and from newly established eea countries of similar stature like Ukraine and Romania which will share their experience in the implementation process. The idea is to have a direct contact with municipalities which are using eea for the city management and have a first-hand approach with eea best practices.

One of the main activities is to prepare an e-learning course for further training, train the energy managers and relevant departments in using eea as an energy management tool and train the energy managers and relevant departments in using eea as an energy management tool.

Thus the process developed by Romania Green Building Council will be key in supporting the learning activities of Excl!te project, especially the participatory development of a Strategic Planning framework for sustainable energy and management. Especially with the current pandemic situation, as most of the face-to-face activities were postponed, the importance of online platform become more and more important, as the starting point for the next eea advisors, auditors, eea office member and city council staff. This online courses, need to be blended with a national contact person, as there are always specific questions that need to be addresses. As there are cases when, especially city council staff are reluctant to new ways of knowledge transfer like training platforms, it is important that they can go directly to a specific topic that they are interested and to find an answer to their specific problem.

There will be 3 to 5 cities represented by a policy level decision maker (mayor or deputy mayor) and energy manager/responsible expert from Bulgaria, North Macedonia, Slovenia, Ukraine and Romania to ensure mutual understanding and coordination between the different administrative levels. The invited municipalities will be more than the planned pilot municipalities in order to have a competition between cities and a solution in case one of the cities decide to step back

The project team lead by RoGBC, as the partners with most experience in eea implementation in Eastern Europe and also is involved in another H2020 project, CoME , had developed a training programme on municipal energy planning and management, eea implementation and SECAP integration, in a streamlined effort to cover the major gap preventing the sustainable implementation of similar initiatives in Eastern Europe – the lack of capacity in local authorities. The programme will be designed with a set of topics with clear learning outcomes, targeted at two levels – policy-level decision makers and energy managers, advisors and experts. It will be available for classroom training and in on-line (using the Moodle platform) in modules, with a total duration of 24 academic hours (8 hours of introductory training and 16 hours of sector-specific topics). Content-wise, it will include PPT presentations with verbal explanation, followed by a test questionnaire and will result with automatically issued project certificate. The completion of the introductory module will be a mandatory requirement for access to project workshops and peer review exchange

The training programme will cover the following topics, the first 4 of which require participation of policy-level decision-makers:

- 2.1. eea general presentation. eea certification/re-certification. Role of eea consultants
- 2.2. eea and Covenant of Mayors
- 2.3. Catalogue of measures
- 2.4. eea Management process
- 2.5. Area 1: City and spatial planning
- 2.6. Area 2: Public buildings
- 2.7. Area 3: Energy supply, waste treatment
- 2.8. Area 4: Mobility
- 2.9. Area 5. Project financing and innovative business models
- 2.10. Area 6: Communal management and stakeholder engagement
- 2.11. Area 7: External communication
- 2.12. Area 8: Climate change mitigation and adaptation
- 2.13. Citizen engagement

The training programmes on eea implementation, financing and civil engagement will be applied for the representatives (energy managers) of the pilot municipalities (3 city representatives, 3 eea consultant, 3 eea office members / country).

3. OBJECTIVE OF DELIVERABLE

The present deliverable „ Online training program“ is supported on an online learning platform (Moodle 3.9.2) which is a free software specific for learning management. The main objective is to share knowledge, documents, experiences, creating a network between users, to engage target audiences in the participatory processes, to better inform innovative sustainable energy management strategies based on eea process, to increase target groups, to communicate and disseminate the results within the project to relevant target groups and encourage the participation of stakeholders. To achieve this goal, a user friendly tailored tools sustainable for all targets and indentified stakeholders, with minimum barrers to entry, is required.

4. GENERAL BACKGROUND FEATURES

In the last 18 months a large amount of people has begun to consider it's normal to spend many hours in their everyday life participating in online learning activities.

User and Management Roles - The platform enables different capabilities for different users. A standard user can get all the features and have all the capabilities from the live

platform, while an administrator has in addition the access to the backoffice where they can take care of the general system and avoid glitches. This function also permits selected users, such as community activators (or face-to-face activators as well), to have more capabilities than standard users.

Admin Panel -The system has a control panel which allows the administrator to control all the technicalities, periodic backups, taking actions in case of malfunction, managing notices to the users, modifying menus, adding new functionalities and managing the multilingual system that allows the platform to be viewed on multiple languages.

Social-like User Interface – The platform User Interface has been studied and structured on the basis of classic social network platforms, to ensure user-friendliness and familiarity. The platform has been designed to be very simple to use and doesn't need any kind of pre practice to be completely experienced.

Privacy Settings – a controlled by each user allowing control of features including showing one's online status and receiving message from persons who have not connected as "friends" on the platform.

Membership Approval – A feature for the platform administrator to ensure only appropriate users are present on the platform. User registration takes place via entering one's e-mail and password. The user then receives an automatic e-mail from the system with a confirmation link on which they have to click to confirm and approve registration to the training program. At this point the registration will be validated and the user can be fully authorized to use the whole platform (thus it is a "Double opt-in" system of registration and approval).

5. ONLINE MANAGEMENT AND MODERATION

For each pilot country one or more moderators will be appointed, as required by the specifications of the project, which will manage and facilitate the discussions. Each separate language platform will also have an assigned moderator. In this way the Moodle training platform will be a public space dedicated to the socialization of all members, but it will contain at the same time specific dedicated discussion areas.

The national moderator are:

For Bulgaria: Teodora Stanisheva tstanisheva@enffect.bg

For North Macedonia: Mariela Klekovska mklekovska@habitat.org.mk

For Romania: Sergiu Fodorean sergiu.fodorean@rogbc.org

For Slovenia: Hana Kolenc hana.kolenc@kssena.velenje.eu

For Ukraine: Vitaliy Volkov volkov@enefcities.org.ua

6. INTRODUCTION – MOODLE PLATFORM



(Moodle logo)

6.1. GENERAL INFORMATION

The Moodle platform is a learning management system created in the Hypertext Preprocessor (PHP) programming language. This platform is free to use, earning a general public license (GNU).


More precisely, Moodle is used as an online learning platform, through which courses and lessons can be created both for the academic environment (schools and universities) and for the sectors in the field of work. This platform offers a multitude of functions for customization and is used to create private websites where online courses can be uploaded.


RoGBC is part of the Exclte project and is responsible to create a learning program. The main objective is to share knowledge, documents and experiences. RoGBC must create a network between users and involve the public in learning processes, thus increasing the engagement and involvement of the target groups. In order to achieve this goal, an adapted tool is needed that all target groups can use. Thus, the Moodle learning platform was chosen, which is a free platform, and the course created and supported by RoGBC servers.


6.2. CREATE ACCOUNT

In order to create an account, the learning platform administrator must receive some details about the user (his/her name, surname, email and country) in order to create the user's account and to be able to offer him / her access to English and native language courses. The created account will have a username in the form (first name-last name) (image 1).

▼ General




Username 


Choose an authentication method 


Suspended account 


Generate password and notify user

The password must have at least 8 characters, at least 1 digit(s), at least 1 lower case letter(s), at least 1 upper case letter(s), at least 1 non-alphanumeric character(s) such as %, -, or #

New password  [Click to enter text](#)  

Force password change 

First name 

Surname 


Email address 

Image 1 (screenshot <http://courses.rogbc.org/>)

6.3. ACCESS

Access to the learning platform of the Ex!te project is based on the email received automatically from the RoGBC server that supports this course. This email contains the user's username and a temporary password. When the user logs in for the first time, they will have to choose their permanent password. It is mentioned that this password must contain a capital letter, a number and a characteristic sign. (image 2)

Hi **Name Surname** A new account has been created for you at Ex!te Online Training Programme and you have been issued with a new temporary password.

This is the draft version. Please take a look and send me all your comments at Sergiu.fodorean@rogbc.org

Your current login information is now: **username: name-surname password: vGUg+6/H** (you will have to change your password when you login for the first time).

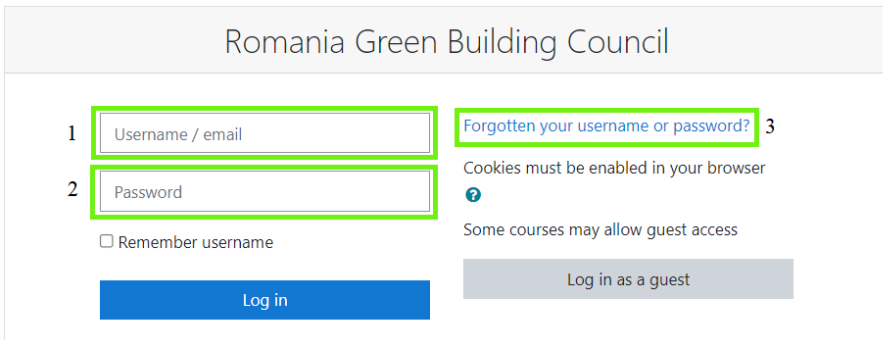
To start using Ex!te Online Training Programme, login at <http://courses.rogbc.org/login/?lang=en> In most mail programs, this should appear as a blue link which you can just click on. If that doesn't work, then cut and paste the address into the address line at the top of your web browser window.

ROGBC processes personal data only for the purpose for which it collects them, in accordance with the legal provisions, the existing internal rules and procedures according to "2016/679 / EU-" GDPR

Cheers from the Ex!te training programme administrator.

Image 2 (screenshot <http://courses.rogbc.org/>)

At this point the user must enter the email address or username created by the admin and the password automatically generated by the system. (image 3)



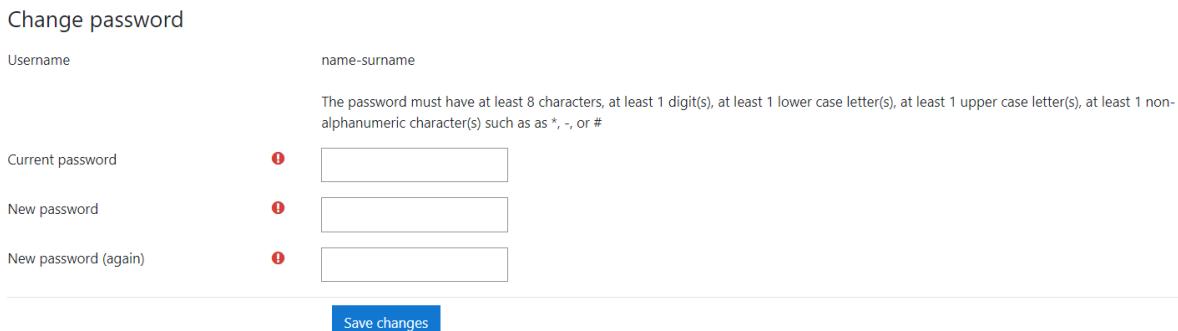
1 - enter your username

2 - enter your password

3 - if you forgot your credentials you can recover them by clicking on this link

Image 3 (screenshot <http://courses.rogbc.org/>)

When the user of the platform logs in for the first time, he must choose his permanent password. It is specified that this password must contain at least 8 characters, a capital letter, a number and a characteristic symbol. If the user forgets his own password, he must follow the link from step 3. (image 4)



Change password

Username name-surname

The password must have at least 8 characters, at least 1 digit(s), at least 1 lower case letter(s), at least 1 upper case letter(s), at least 1 non-alphanumeric character(s) such as *, -, or #

Current password !

New password !

New password (again) !

Save changes

Image 4 (screenshot <http://courses.rogbc.org/>)

6.4. FRONT PAGE

There are 6 courses on the first page, but the user will receive access only to the course in English and the course translated into his native language. This project includes 5 countries from Eastern Europe (Bulgaria, North Macedonia, Slovenia, Ukraine and Romania). The courses have identical content, the only difference is the language in which it is translated, so it will be very easy for users to understand what is presented. (image 5)



Image 5 (screenshot <http://courses.roqbc.org/>)

6.5. COURSES

The course has 9 chapters. Each chapter is positioned so that the user can go through and understand the methodology in a coherent way. There are chapters where the user has to answer a few quizzes to move on. Each topic has a short description and attached files where you can find all the necessary details.

6.5.1 Curriculum

Curriculum


 Curriculum training programme

Image 6 (Curriculum screenshot <http://courses.roqbc.org/course>)

The first topic is called Curriculum. In this topic is a pdf file (Curriculum training programme) which briefly describes the structure of the online learning program for which RoGBC was responsible. (image 6)

This file contains several sub-points. These sub-points describe the target audience, the learning objectives, but also the results we want to achieve.

6.5.2 EEA – GENERAL PRESENTATION

EEA - GENERAL PRESENTATION



Image 7 (General presentation screenshot <http://courses.rogbc.org/course>)

This topic is the introductory part of the European Energy Award (eea). The attached document (General Presentation) contains a series of general information related to this initiative.

The European Energy Award is a voluntary quality management and awarding system that supports local authorities in establishing interdisciplinary planning approaches and implementing effective energy and climate policy measures.

The standardized evaluation procedure allows to compare the performance of different communities that are willing to get the European Energy Award.



Image 7.1 (General presentation screenshot <http://courses.rogbc.org/course>)

6.5.3 NEW GREEN DEAL

NEW GREEN DEAL



Image 8 (New Green Deal screenshot <http://courses.rogbc.org/course>)

On position 3rd in this course is the topic entitled „NEW GREEN DEAL“. New Green deal is about improving human life and the environment. All the improvements in this regard will help Europe become climate neutral. New Green Deal wants Europe to become climate neutral by 2050. It wants to help and protect the lives of people, animals and plants by reducing pollution. Also want to help companies to become world leaders in clean products and technologies.

Besides all this in this project European Commission aims to at least double renovation rates in the next ten years and make sure renovations lead to higher energy and resource efficiency. This will enhance the quality of life for people living in and using the buildings, reduce Europe's greenhouse gas emissions, foster digitalisation and improve the reuse and recycling of materials. By 2030, 35 million buildings could be renovated and up to 160,000 additional green jobs created in the construction sector.



Image 8.1 (New Green Deal screenshot <http://courses.rogbc.org/course>)

6.5.4 DETAILED PRESENTATION OF EEA

DETAILED PRESENTATION OF EEA



Image 9 (Detailed Presentation of eea screenshot <http://courses.rogbc.org/course>)

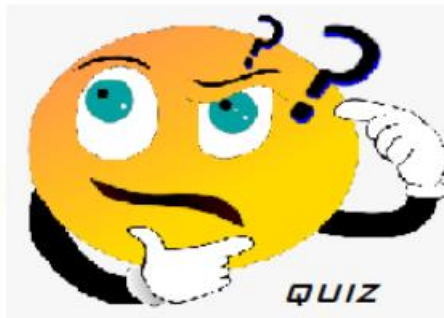
In addition to the introductory part from the beginning, our course also has a detailed part of the European Energy Award process. In this topic is presented in detail the eea certification process.

The European Energy Award® is a qualified instrument for steering and controlling communal energy policy.

- The European Energy Award® (eea) allows municipalities to identify strengths, weaknesses and potential for improvement and, above all, implement effectively energy efficient measures.

- The success of a municipality's efforts is made visible by an award, namely the European Energy Award® (eea®).

- The standardised assessment permits a benchmarking between the eea® communities.



In addition to this complete presentation of the eea process which is divided into 4 parts, we created a series of quizzes that participants must answer. After each part of the presentation there is a quiz related to the part of the presentation that the user has just gone through.

Each quiz has several types of questions. There are questions where the user has to choose the correct answer, questions where he has to answer “true or false”, or questions where the user has to write very short answers.



Image 9.1 (Detailed Presentation of EEA screenshot <http://courses.rogbc.org/course>)

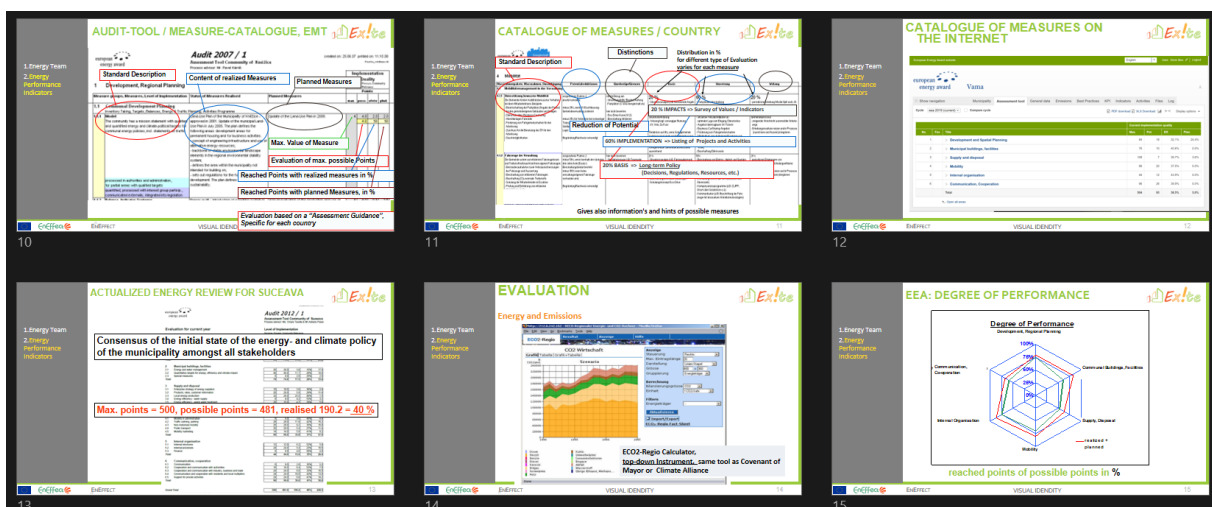


Image 9.2 (Detailed Presentation of EEA screenshot <http://courses.rogbc.org/course>)

6.5.5 ROMANIAN NATIONAL ASSESSMENT GUIDANCE

NATIONAL ASSESSMENT GUIDANCE



1. Dezvoltare si planificare urbana
2. Cladiri municipale, facilitati
3. Aprovizionare si eliminarea deseurilor
4. Mobilitate
5. Organizare interna
6. Comunicare, cooperare

Image 10 (National Assessment Guidance screenshot <http://courses.rogbc.org/course>)

6.5.6 COMPARISON BETWEEN EEA AND CoM, COME EASY project

COMPARISON BETWEEN EEA AND CoM, CoME EASY project



Image 11 (Comparison Between eea and CoM, COME EASY project screenshot <http://courses.rogbc.org/course>)

The topic no. 6 shows the comparison between eea and CoM.

The EU Covenant of Mayors for Climate & Energy brings together thousands of local governments voluntarily committed to implementing EU climate and energy objectives.

The Covenant of Mayors was launched in 2008 in Europe with the ambition to gather local governments voluntarily committed to achieving and exceeding the EU climate and energy targets.

Not only did the initiative introduce a first-of-its-kind bottom-up approach to energy and climate action, but its success quickly went beyond expectations.

The initiative now gathers 9,000+ local and regional authorities across 57 countries drawing on the strengths of a worldwide multi-stakeholder movement and the technical and methodological support offered by dedicated offices.

The Global Covenant of Mayors is capitalising on the experience gained over the past eight years in Europe and beyond, and is building upon the key success factors of the initiative: its bottom-up governance, its multi-level cooperation model and its context-driven framework for action.

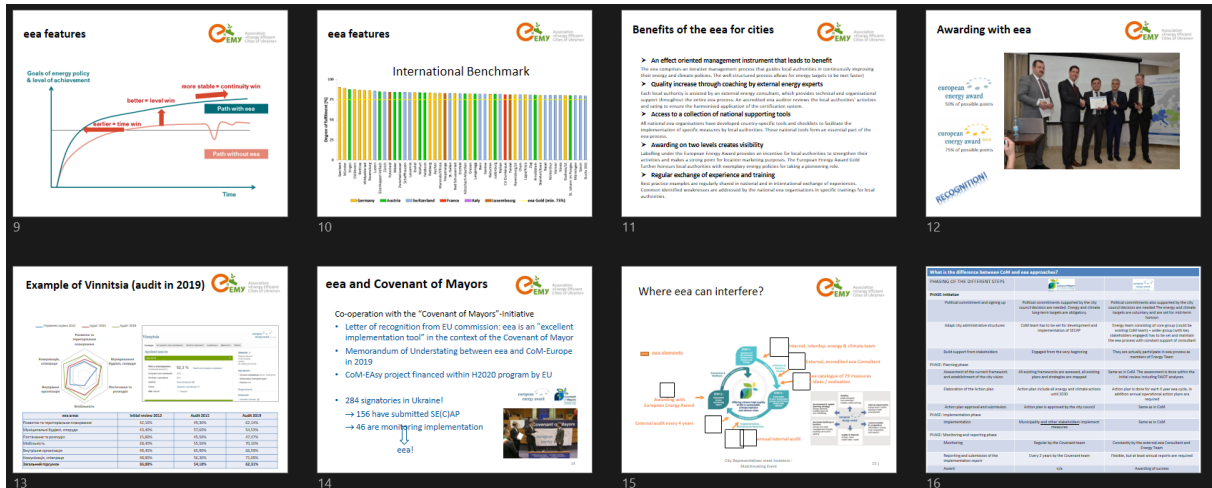


Image 11.1 (Comparison Between eea and CoM, CoME EASY project screenshot <http://courses.rogbc.org/course>)

6.5.7 TOOLS FOR THE EMT PLATFORM, CoME EASY project

TOOLS FOR THE EMT PLATFORM, CoME EASY project



Image 12 (Tools For The EMT Platform – CoME EASY project screenshot <http://courses.rogbc.org/course>)

This topic is divided into 9 sub-points.

- **CoME EASY Project**



CoME EASY is a project funded by the European Commission in the framework of Horizon 2020 research and innovation programme. The project aims to support and extend the engagement of local public authorities on their pathway towards a sustainable, smart and effective energy and climate policy according to the EU 2030 climate targets by combining the forces of some of the strongest EU energy and climate policy initiatives (eea, CoM, ISO, Smart Cities & Communities,...).

- **ISO Facilitator**

[2.ISO Facilitator](#)

The ISO facilitator tool aims at enabling the ISO 50001 engagement of municipalities by providing them structured information and data available from the eea and the CoM process. The implementation of an EnMS based on ISO 50001 can be supported by: ♦ the reuse of information already reported in the EMT system ♦ the KPIs tool, the EPT, the Municipal buildings database, the Best Practice Library A structured text-file will be downloadable from the EMT/Open platform. The texts can be restructured by the advisor to be used for the ISO 50001 manual.

- **Stakeholders engagement**

[3.Stakeholders engagement](#)

Stakeholder: any person or group with influence or influenced by energy and climate topic. Key groups: Energy&Sustainability, Mobility, ICT.

Tips for the selection of stakeholders:

- Be inclusive: identify all interested people and groups
- Prioritize interests in order to define who must be involved from the start and who can be involved later or in specific projects or only be informed

- **Tools_Adaption**

[4.Tools_Adaption](#)

The Urban Adaptation Support Tool The tool was developed by the CoM to support cities in the development of their local adaptation strategy and their SECAPs. It accompanies cities in a step by step adaptation process.

- **Tools_BP**

[5.Tools_BP](#)

The Best Practice Library aims at collecting and publishing best practices for sharing successful experiences among municipalities and allowing learning from each other. The Best Practice Library is hosted on the EMT and accessible through the Open Platform (registration for free for any interested user). The approved Best Practices are published on the CoME EASY website.

- **Tools_EPT**

[6.Tools_EPT](#)

The Emission Path Tool is a set of interlinked tools aiming at:

- collecting and processing quantitative data for the elaboration of Emission Inventories (BEI &MEI)

- elaborating diverging scenarios/reduction paths based on different reduction targets
- comparing the municipality scenario/reduction path to national and European reduction paths

- **Tools_KPI's**



KPI - Key Performance Indicator

CoME EASY set of KPI's is compliant with the main initiatives and systems used at EU level and covers several fields of interests.

CoME EASY set of KPIs has been selected:

- to allow municipalities to easily assess their progress over time
- to adapt existing measurement assets in order to facilitate data collection and use ♦ to achieve broad acceptance and use among the stakeholders

- **Tools_Mitigation Tool**



The Mitigation Calculator aims at supporting municipalities in selecting appropriate mitigation measures during the planning phase.

The tools allows for a rough estimation of impacts of specific mitigation measures in terms of energy and CO2 savings, RES production and investment cost and is based on data from the specific BEI/MEI of the municipality

- **Tools_SECAP creator**



The SECAP creator aims at collecting all data available from the eea system (EMT) and from the CoME EASY tools to elaborate a SECAP reporting in a suitable format for exporting/submitting to CoM.

1. The data collected yearly during an eea process and through the CoME EASY tools (EPT, KPIs, BPs, Mitigation tool, Adaptation tool etc.) are structured in xls file with results

2. All the available information, text and data, are aggregated to deliver a SECAP report explaining the situation and the goals of the municipality (□ SECAP Word document to be submitted to City Council and CoM)

3. The eea activity plan could also be attached to the SECAP report to support the monitoring of actions in the implementation phase.

6.5.8 ASSIGNMENTS

ASSIGNMENTS



Image 13 (Assignments screenshot <http://courses.rogbc.org/course>)

This topic is about practice. There is a file called "Exercises" where are 4 word documents. Each document presents a situation that a city may have, and the user must answer to a series of requirements based on that he/she had learned from the online learning program created by RoGBC.

6.5.9 FEEDBACK AND FORUM

FEEDBACK AND FORUM



If you have questions or suggestions for improvement, please write to me at the email address: sergiu.fodorean@rogbc.org

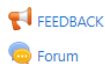


Image 14 (Feedback and Forum screenshot <http://courses.rogbc.org/course>)

The last topic is related to feedback, where the user can express their opinion about the course, what they would like to be modified or improved. Also in this topic is the forum section, where each user can ask questions related to the course, and the administrator or other participants can answer.

7. CONCLUSIONS

The Moodle platform is dedicated to online learning courses, with a very simple interface, being ideal for all users. You do not need a pre-preparation training for use.

The approach regarding language includes one language for each country platform plus one “international platform” in English. Each separate language platform is differentiated only by the allowed language on that specific platform.

RoGBC has proposed itself to moderate the International Platform. Other project partners are welcome to participate as moderators of the International Platform if they wish.

The European privacy requirements must be considered and respected as the Online training program will be collecting user data. The platform avoids collecting unnecessary data and provides notification to users as required.

8. DIPLOMA

DIPLOMA



THIS CERTIFIES THAT

NAME - SURNAME

Has successfully completed the Online Training
Programme

DAY – MONTH – YEAR



WWW.EXCITE-PROJECT.EU

WWW.EUROPEAN-ENERGY-AWARD.ORG



This project has received funding from the European Union's Horizon 2020 research and innovation programme under Grant Agreement No 892034.



AUSTRIAN ENERGY AGENCY



Alternatives pour l'énergie, les énergies renouvelables et l'environnement



ROMANIA
GREEN
BUILDING
COUNCIL



KSSENA



Association
«Energy Efficient
Cities of Ukraine»



SALZBURGER INSTITUT FÜR
RAUMORDNUNG & WOHNEN

